

U.S. Army Public Health Center

Army Influenza Activity Report

Week ending 9 November 2019 (week 45)

Influenza Vaccination Coverage*

As of 05 November 2019

N/A	DoD
40%	Army Active Duty
38%	Army Guard
51%	Army Reserve

*Data Source: MEDPROS, ASIMS, MRRS

SUMMARY

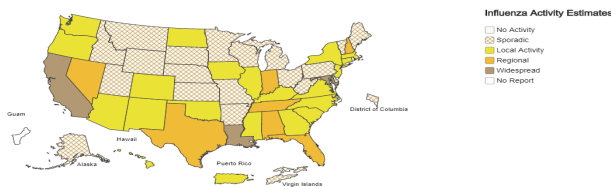
Flu activity currently remains low in the Army population. Significant increase (32.5%) in the number of positive respiratory specimens when compared to the previous week was noted; There were 197 positive specimens in week 44 and 261 in week 45. Data from all regional health command were not received. About 1.2% of 1,140 specimens tested for influenza A were positive. The majority of the influenza A-positive specimens are reported from RHC-A [n=4(25%)] and RHC-C [n=11(68%)]. One hospitalization was reported in week 45, bringing the season total to five. Out of the 2,757 clinical specimens tested, 9.4% were positive. Influenza A and B accounted for 6.1% and 67.1%, respectively. The majority of positive specimens were in younger populations; those under 18 years of age accounted for 87% overall of positive respiratory illness specimens in week 45 while Active Duty Soldiers, 18 to 29 year-olds, accounted for 66.6% of positive specimens.

GEOGRAPHIC SPREAD

FLUVIEW

A Weekly Influenza Surveillance Report Prepared by the Influenza Division
Weekly Influenza Activity Estimates Reported by State and Territorial Epidemiologists*

Week Ending Nov 09, 2019 - Week 45



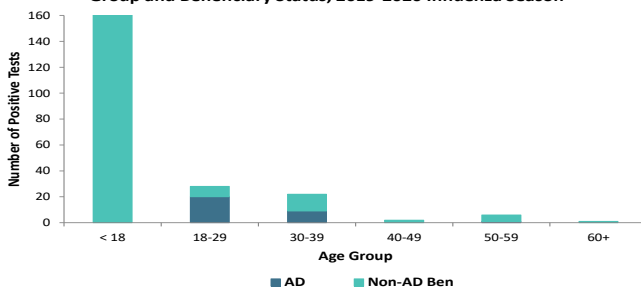
*This map indicates geographic spread and does not measure the severity of influenza activity.

CDC

In week 45, in the general U.S. population, widespread influenza activity was reported in California, Louisiana and Maryland; regional activity was reported in Alabama, Florida, Indiana, Nevada, New Hampshire, Tennessee, and Texas; local activity was reported in Puerto Rico and 20 states. Sporadic activity was reported in the District of Columbia, U.S. Virgin Islands, and 19 states. Rhode Island reported no activity, and Guam did not report.

DEMOGRAPHICS

Positive Respiratory Specimen Results from Army MTFs by Age Group and Beneficiary Status, 2019-2020 Influenza Season

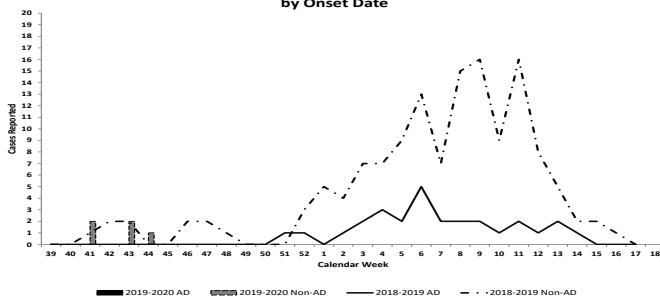


AD: A total of 30 positive respiratory specimens were collected from Active Duty (AD) Soldiers in week 45; 66.6% (n=20) were from Soldiers 18 to 29 years of age; 30% (n=9) were from soldier 30 to 39 years of age; and 3.3% (n=1) were from soldier between 50-59 years of age.

Non-AD: A total of 231 positive respiratory specimens were collected from non-AD individuals; 87% (n=202) were from those under 18 years of age; 5.6% (n=13) were from the 30-39 age group; 3.4% (n=8) were from the 18-29 age group; and 2.1% (n=5) were from the 50-59 age group.

INFLUENZA-ASSOCIATED HOSPITALIZATIONS

Army Influenza-Associated Hospitalizations Reported in DRSi by Onset Date



In week 45, one hospitalization, with an onset date in week 45, was reported to DRSi. The reported case was a non-AD service member. To date, five hospitalizations total have been reported since the start of the season. During the 2018-2019 season, no hospitalizations were reported in week 45.

*DRSi does not capture cases older than 65 years old for influenza-associated hospitalizations.

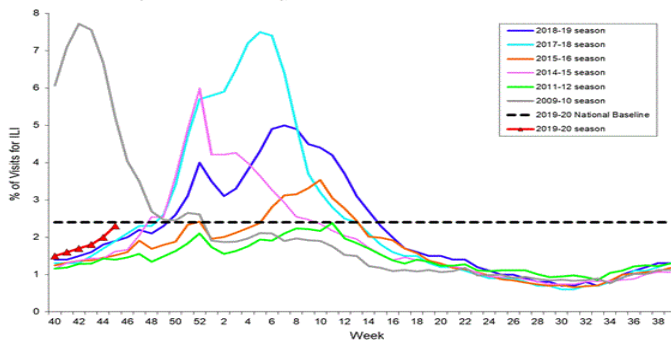
Additional Resources: [Army Influenza Reports](#); [ARD Reports](#); [AFHSC Influenza Reports](#); [NHRC FRI Reports](#); [DoD Pandemic Influenza Watchboard](#); [CDC](#)

Key: ILI-Influenza-Like Illness; DRSi- Disease Reporting System Internet; NHRC- Naval Health Research Center; ADV-Adenovirus; RSV-Respiratory Syncytial Virus; DED- Disease Epidemiology Division; SM-Service Member

Questions?
[Email APHC DEP](#)
410-436-7605

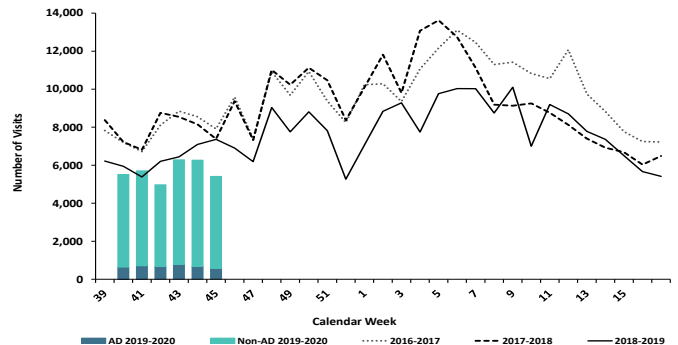
ILI ACTIVITY - UNITED STATES

Percentage of Visits for Influenza-like Illness (ILI) Reported by the U.S. Outpatient Influenza-like Illness Surveillance Network (ILINet), Weekly National Summary, 2019-2020 and Selected Previous Seasons



ILI ACTIVITY - ARMY

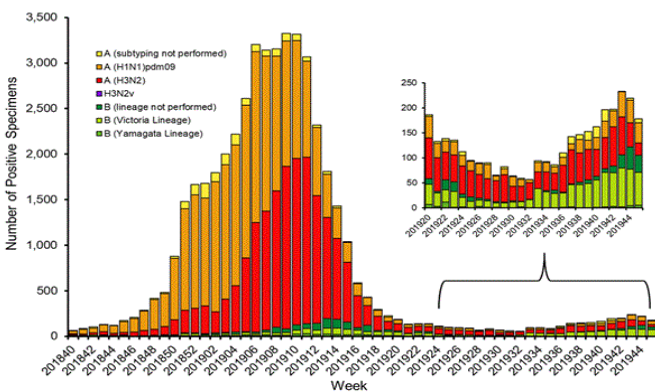
ESSENCE Weekly Outpatient Clinic Visits for Influenza-like Illness Army MTFs, All Services, 2016-2019



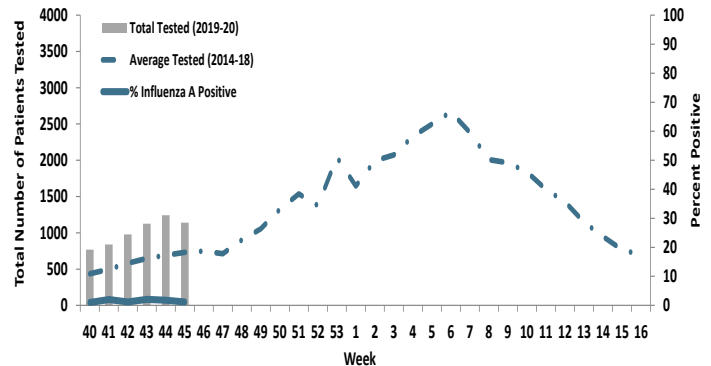
Nationwide in week 45, incident ILI activity was 2.3%; this is below the national baseline of 2.4%. Regionally, the percentage of ILI outpatient visits reported to the CDC ranged from 1.2% to 4.8%. At Army medical treatment facilities, incident ILI activity decreased marginally from 13.6% compare to the previous week. The majority of ILI encounters (89.5%) were from non-AD patients in week 45. The AD population experience a 16.2% decrease compare to week 44. There were 26.4% fewer ILI outpatients visits when compared to week 45 of the previous season.

LABORATORY RESPIRATORY SPECIMEN TESTING

Influenza Positive Tests Reported to CDC by U.S. Public Health Laboratories, National Summary, September 30, 2018 – November 9, 2019



Proportion of Positive Influenza A Specimens for U.S. Army 2019-2020



Nationwide, 844 specimens were tested and submitted to CDC, of which 178 (21%) were positive for influenza in week 45. In the Army population, 1.2% of 1,140 specimens tested for influenza A were positive. The majority of the influenza A-positive specimens are reported from RHC-A [n=4(25%)] and RHC-C [n=11(68%)]. RHC-E did not report.

		Week 42	Week 43	Week 44	Week 45	Season Total
Test Types Among Positive Influenza A Specimens	RAT	8	16	16	12	73
	Culture	2	3	0	1	7
	PCR	2	5	7	3	21
Army MTF Laboratory Results, 2019-20	Influenza A	12	24	23	16	101
	Influenza B	22	19	113	175	348
	Adenovirus	9	7	10	9	47
	Enterovirus	1	0	0	0	4
	Parainfluenza	18	18	5	6	66
	RSV	33	36	46	55	200
	Negative	2324	2387	2695	2480	13451
Total	2431	2515	2915	2757	14318	

Of the 2,757 specimens tested in week 45, 9.4% (n=261) were positive for any type of respiratory illness, which represents a 32.5% increase from the 197 positive specimens in week 44. The most common type of positive specimen in week 45 was influenza B, which accounted for 67.1% (n=175) of positive specimens. This represents a 54.9% increase when compared to week 44. RSV was the second most common positive specimen in week 45, accounting for 21.1% (n=55); this was followed by influenza A (6.1%;n=16), adenovirus (3.4%; n=9), and parainfluenza (2.3%; n=6).

Locations providing week 45 laboratory data as of 13 November 2019: Ft Benning, Ft Bliss, Ft Bragg, Ft Campbell, Ft Carson, Ft Gordon, Ft Hood, Ft Huachuca, Ft Knox, Ft Leavenworth, Ft Lee, Ft Leonard Wood, Ft Polk, Ft Riley, Ft Rucker, Ft Sam Houston, Ft Sill, Ft Stewart, Ft. Wainwright, Korea, Tripler, and Walter Reed.

*NOTE: Madigan AMC data was not received due to the switch from AHLTA/CHCS to MHS Genesis

LABORATORY RESPIRATORY SPECIMEN TESTING

Region	Installation	Influenza A			Influenza B			Adenovirus		
		No. Tested	% Positive	Baseline % Positive	No. Tested	% Positive	Baseline % Positive	No. Tested	% Positive	Baseline % Positive
RHCA	Ft. Belvoir	131	1.5	0	77	1.3	0	63	12.7	15.3
	Ft. Benning	89	0	0.9	89	0	0			
	Ft. Bragg	58	0	3						
	Ft. Campbell	68	0	0	68	1.5	0			100
	Ft. Drum	11	0	0						100
	Ft. Eustis	19	5.3	4.5			100			
	Ft. Gordon	7	0	0	7	28.6	0			100
	Ft. Jackson	5	0	0	5	0	2.2			
	Ft. Knox	7	0	0	7	0	0			
	Ft. Lee	16	0	0						
	Ft. Meade	2	0	0						
	Ft. Rucker	15	0	0	15	6.7	0			
	Ft. Sam Houston			0.5			0.5			100
	Ft. Stewart	38	0	4.5	38	2.6	1.9			
Redstone Arsenal	15	0	0	15	0	0				
West Point Military Academy	12	8.3	0	4	0	0				
RHCC	Ft. Bliss	109	1.8	5.1	102	2	0	6	16.7	0
	Ft. Carson	39	15.4	9.3			100			
	Ft. Hood	429	0.5	4	429	38.2	0	1	0	
	Ft. Huachuca	2	0	0	2	0	0			
	Ft. Irwin	7	0	6.3	7	0	0			
	Ft. Leavenworth	13	0	0	13	0	0			
	Ft. Leonard Wood	25	0	0	25	4	0			
	Ft. Polk	62	1.6	0			100			
	Ft. Riley	43	0	0	43	0	0			
Ft. Sill	37	0	0	2	100					
RHCE	Landstuhl Regional Medical Center			4.3		0			0	
RHCP	Ft. Wainwright	30	0	0	30	0	0			
	Korea	9	0	0	3	0	0	3	0	9.1
	Tripler Army Medical Center	75	1.3	4.2	55	0	0	55	0	4.4
Region	Installation	Enterovirus			Parainfluenza			RSV		
		No. Tested	% Positive	Baseline % Pos.	No. Tested	% Positive	Baseline % Pos.	No. Tested	% Positive	Baseline % Pos.
RHCA	Ft. Belvoir				68	8.8	6.3	87	11.5	14.1
	Ft. Campbell						100			100
	Ft. Drum									25
	Ft. Gordon						100			100
	Ft. Sam Houston						100			100
	Ft. Stewart						100	24	45.8	21.7
	West Point Military Academy					100				
RHCC	Ft. Bliss							101	3	7.4
	Ft. Carson							9	0	0
	Ft. Hood							99	20.2	33.3
	Ft. Leavenworth							3	33.3	0
	Ft. Leonard Wood						100			
	Ft. Polk							26	11.5	13.6
	Ft. Riley							26	15.4	0
Ft. Sill							1	0	0	
RHCE	Landstuhl Regional Medical Center					10				10.5
RHCP	Ft. Wainwright							12	0	39.1
	Korea			0	3	0	9.1	3	0	13.6
	Tripler Army Medical Center	55	0	2.3	55	0	0	3	100	100

No.: Number of specimens tested during MMWR week 45 2019.

% Pos.: Percentage of positive specimens reported during MMWR week 45, 2019.

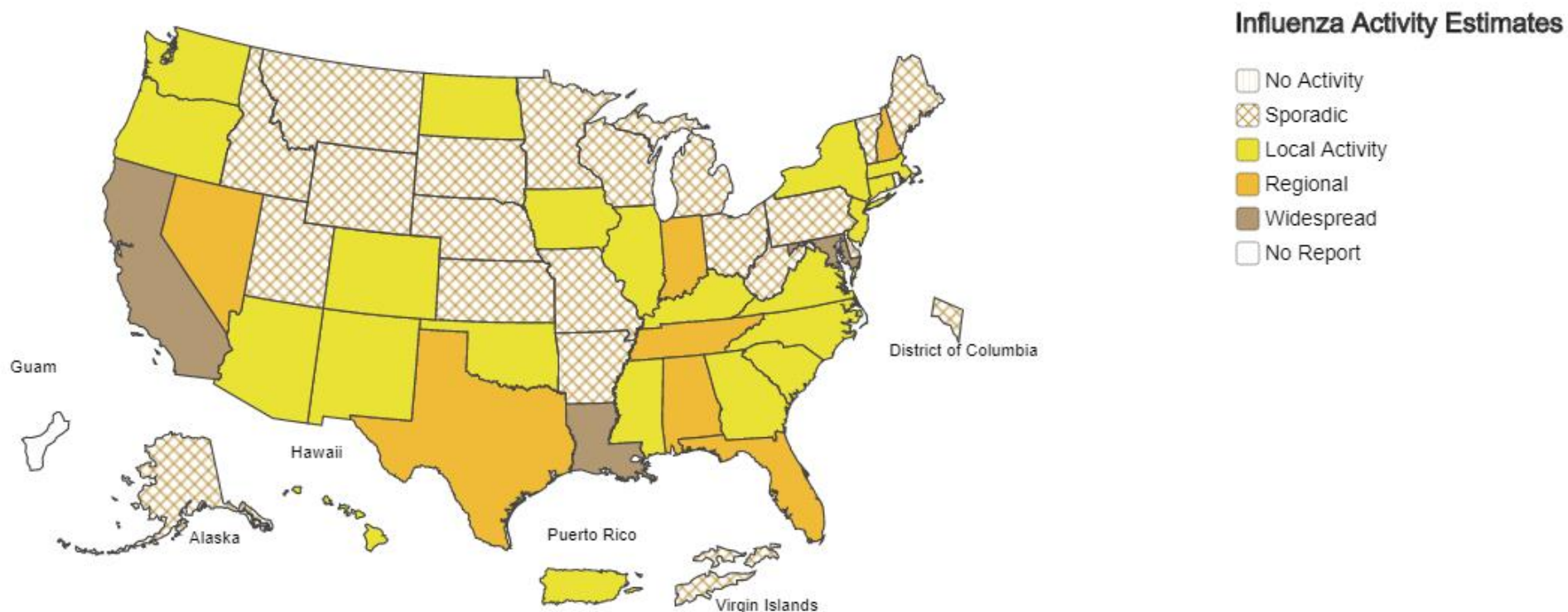
Baseline % Pos.: Percentage of positive specimens reported in MMWR week 1 during influenza seasons from September 2012 - May 2018.

Missing values indicate that specimens were not tested for the disease during the week of interest.

A Weekly Influenza Surveillance Report Prepared by the Influenza Division

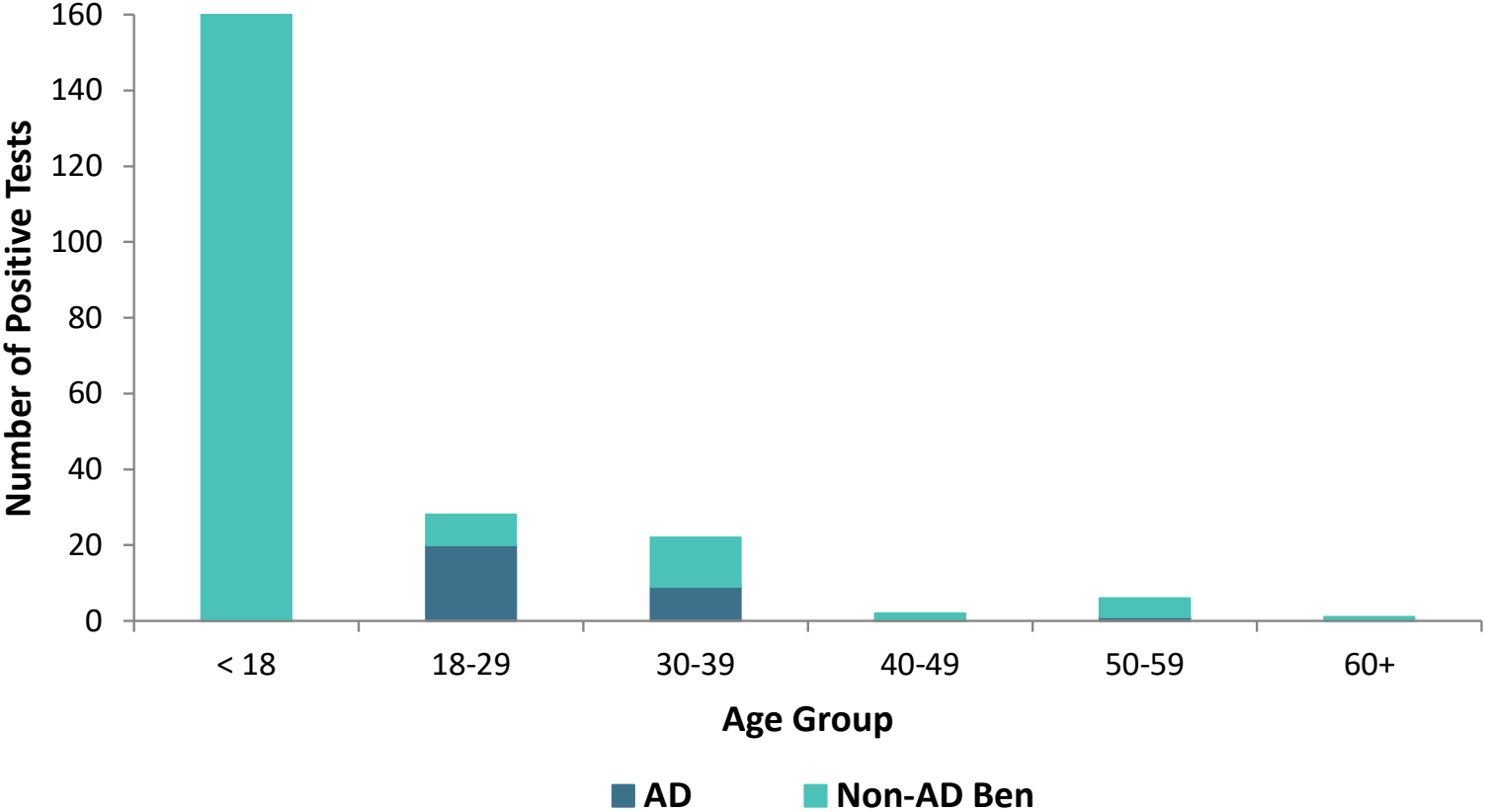
Weekly Influenza Activity Estimates Reported by State and Territorial Epidemiologists*

Week Ending Nov 09, 2019 - Week 45



*This map indicates geographic spread and does not measure the severity of influenza activity.

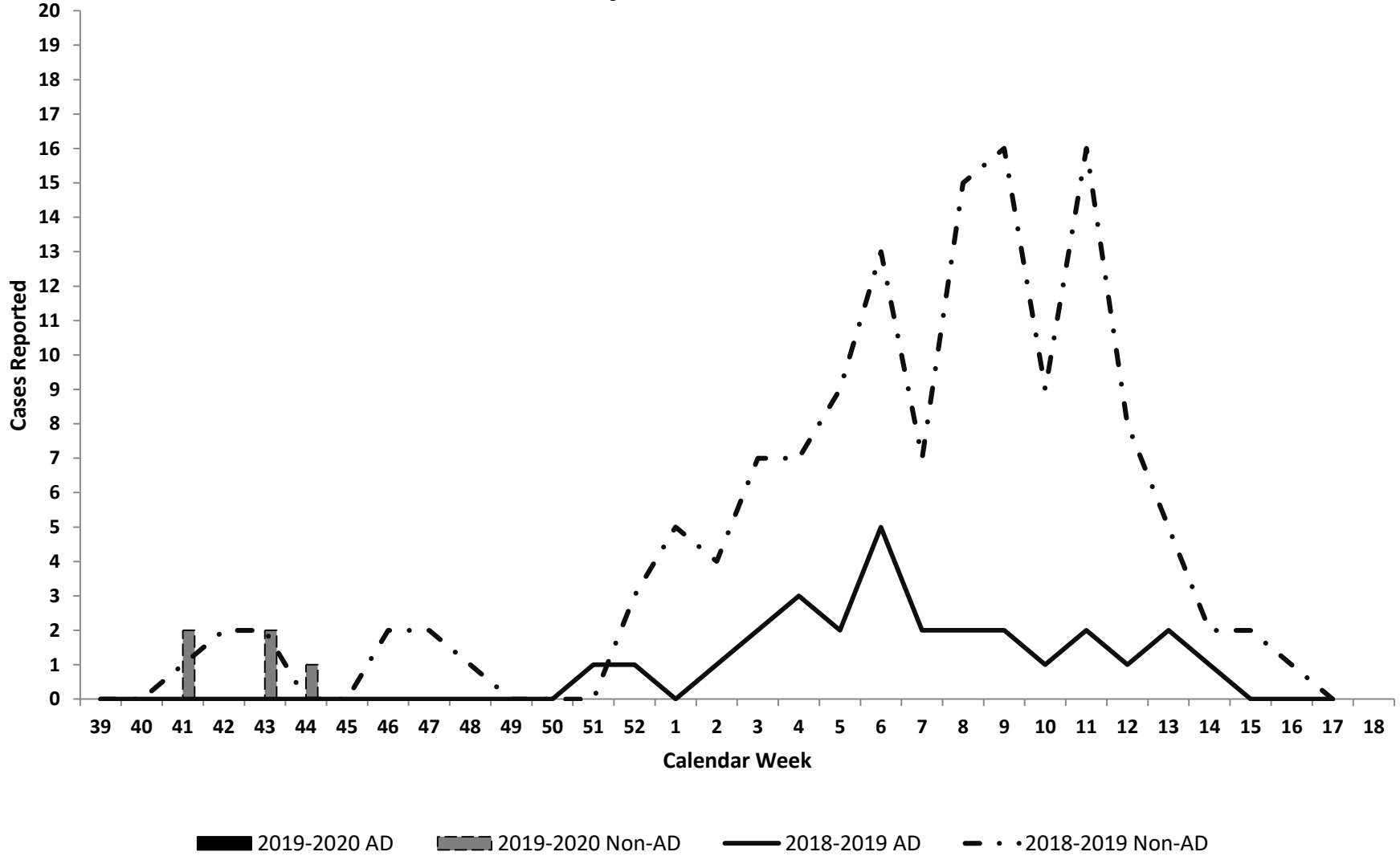
Positive Respiratory Specimen Results from Army MTFs by Age Group and Beneficiary Status, 2019-2020 Influenza Season



Week 45			
Age Group	AD	Non-AD Ben	Season Total
< 18	0	202	202
18-29	20	8	28
30-39	9	13	22
40-49	0	2	2
50-59	1	5	6
60+	0	1	1
Total	30	231	261

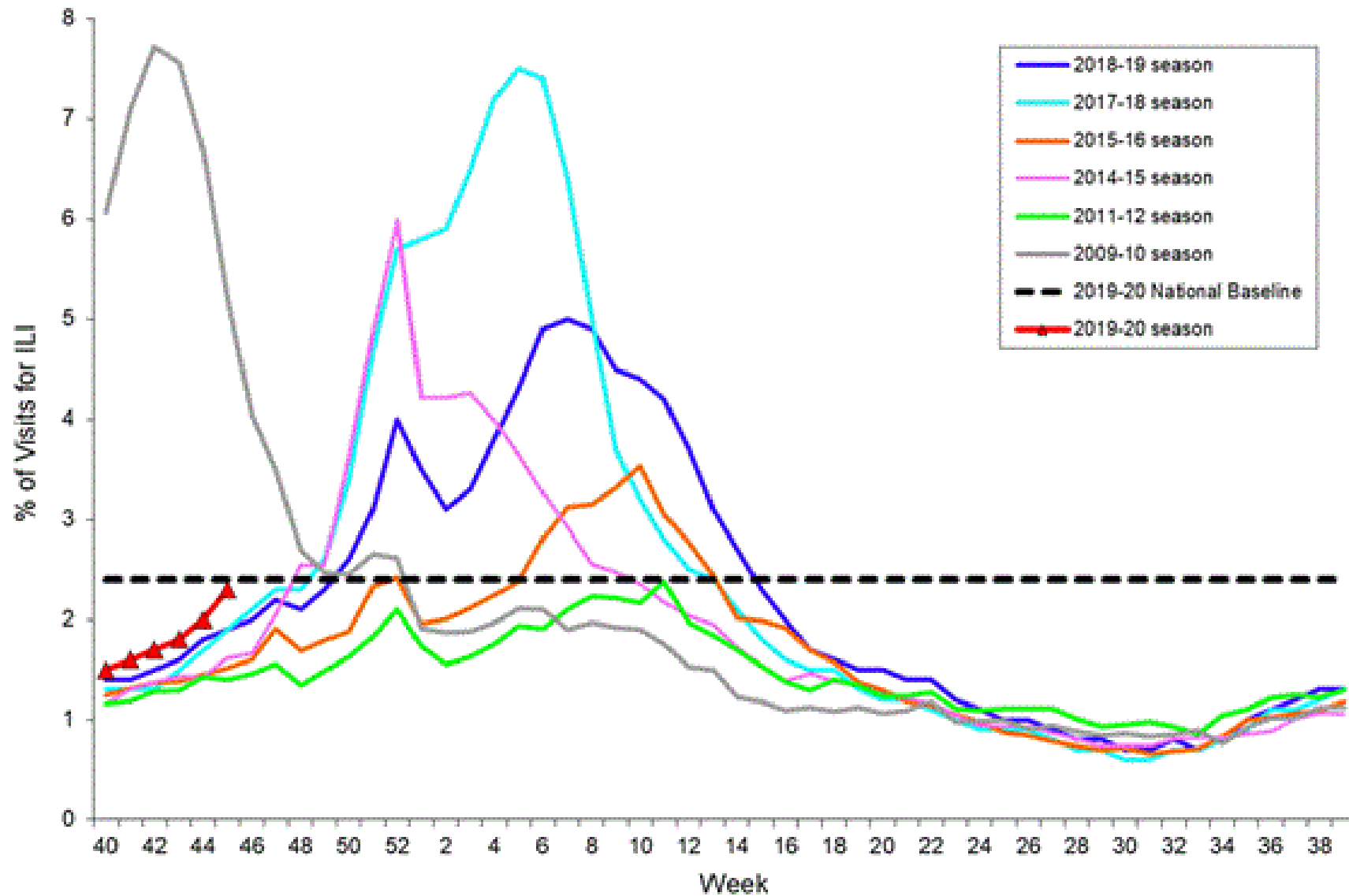


Army Influenza-Associated Hospitalizations Reported in DRSi by Onset Date



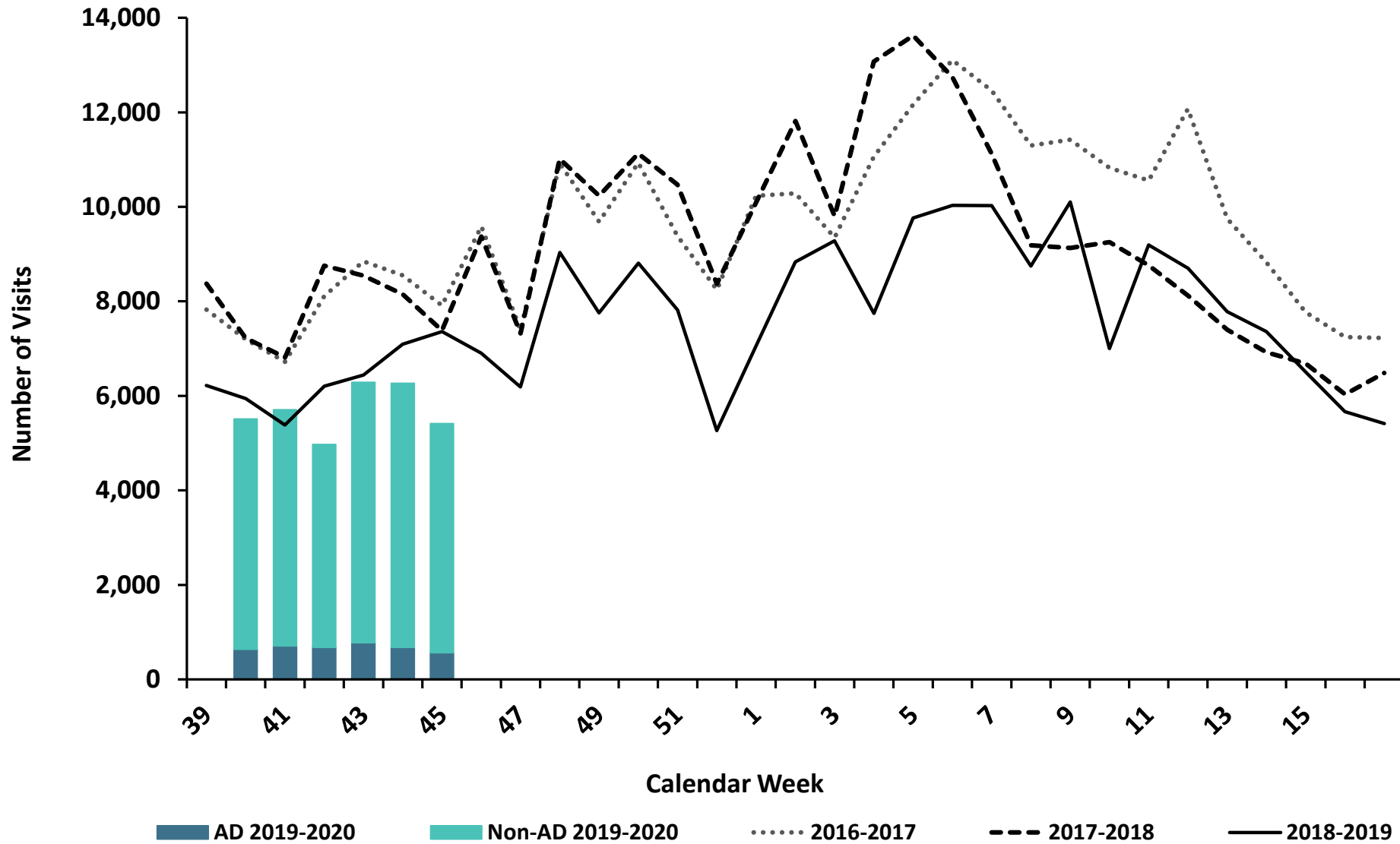
Note: Reportable influenza cases are defined as only cases that have been hospitalized and are under the age of 65. See [Armed Forces Reportable Medical Events Guidelines and Case Definitions](#) for more information.
Data as of 13 November 2019.

Percentage of Visits for Influenza-like Illness (ILI) Reported by the U.S. Outpatient Influenza-like Illness Surveillance Network (ILINet), Weekly National Summary, 2019-2020 and Selected Previous Seasons

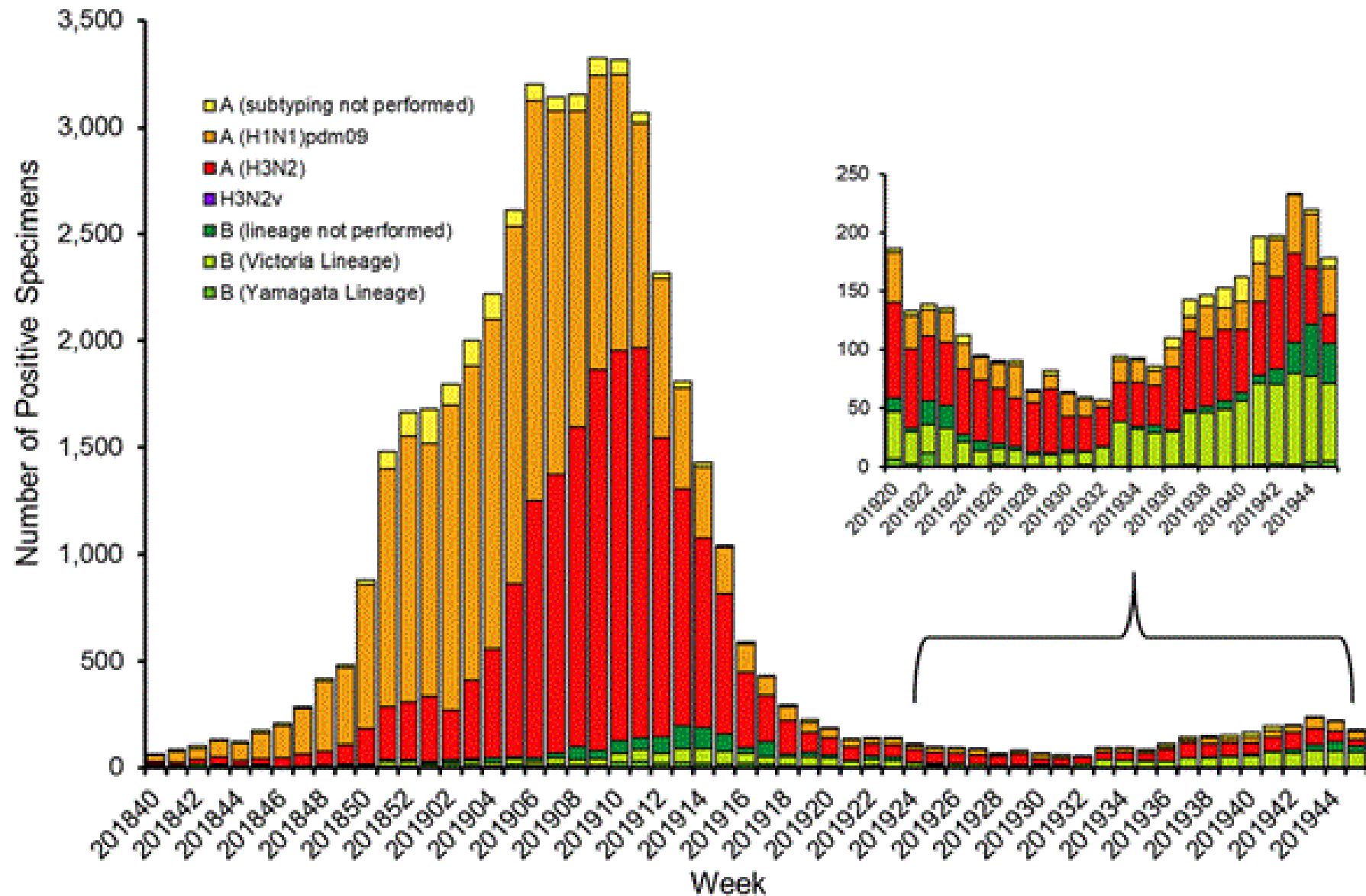


ESSENCE Weekly Outpatient Clinic Visits for Influenza-like Illness

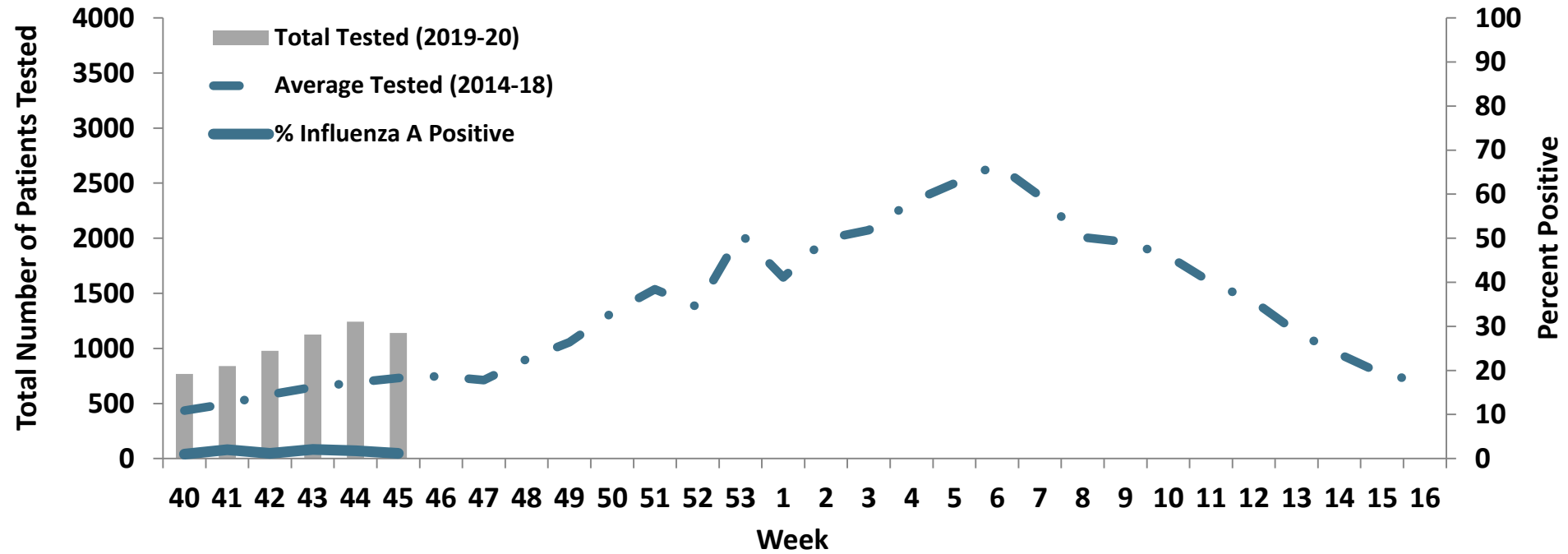
Army MTFs, All Services, 2016-2019



Influenza Positive Tests Reported to CDC by U.S. Public Health Laboratories, National Summary, September 30, 2018 – November 9, 2019



Proportion of Positive Influenza A Specimens for U.S. Army 2019-2020



		Week 42	Week 43	Week 44	Week 45	Season Total
Test Types Among Positive Influenza A Specimens	RAT	8	16	16	12	73
	Culture	2	3	0	1	7
	PCR	2	5	7	3	21
Army MTF Laboratory Results, 2019-20	Influenza A	12	24	23	16	101
	Influenza B	22	19	113	175	348
	Adenovirus	9	7	10	9	47
	Enterovirus	1	0	0	0	4
	Parainfluenza	18	18	5	6	66
	RSV	33	36	46	55	200
	Negative	2324	2387	2695	2480	13451
	Total	2431	2515	2915	2757	14318

